

# 2007 Annual Report



Oconto County Department of  
Health and Human Services



---

## Department of Health and Human Services

*.....promoting healthy and responsible families*

501 Park Avenue

Oconto, WI 54153-1612

920-834-7000

920-834-7045 (no voice response TDD)

920-834-6889 FAX

Dear Health and Human Services Board Members:

Recently, during a casual conversation I was having with a gentleman I had just met, he asked where I worked. I responded, "For Oconto County." He then went on to say, "Boy, you must have plowed a lot of snow this past winter." His response was not an unusual occurrence for such a question. I typically just let it go because, first of all, it is a good cover and secondly, it often is not worth the effort explaining because it is difficult for people to understand what we do at Health and Human Services.

Then a couple weeks ago at a training, I heard a Kentucky State Human Services worker say he tells people he is in the business of "family restoration". It may sound a little corny or arrogant, but I liked it and have chosen to expand it to "family preservation and restoration".

As we review this 2007 Annual Report, you will see that most, if not all, of our programs are designed for helping families stay together or reunify. Sometimes it is a family of one, while others have multiple members. The services can generally be categorized as prevention, intervention, or supportive in nature. Our goal is, with a proper assessment, we and/or our partners can provide what is necessary to maintain families in their community. As an administrator, I often look at this as a budget issue. As a person, I believe it is generally best for all concerned and that is why we continue to invest time and money into such an effort.

Thank you for your support,

Craig Johnson, Director  
Oconto County Health and Human Services Director

# TABLE OF CONTENTS

	<u>Page</u>
<b>ADMINISTRATION</b>	
Board of Directors/Committees .....	1
Program Organizational Chart .....	2
Financial Summary .....	3
<b>PUBLIC HEALTH DIVISION</b>	
Organizational Chart .....	4
Financial Summary .....	5
Program Activity Graphs .....	6-8
Division Summary .....	9
<b>ECONOMIC SUPPORT DIVISION</b>	
Organizational Chart .....	10-11
Financial Summary .....	12
Program Highlights .....	13-16
Division Summary .....	17
<b>FAMILY SERVICES DIVISION</b>	
Organizational Chart .....	18
Financial Summary .....	19
Program Activity Graphs .....	20-22
Division Summary .....	23
<b>COMMUNITY SERVICES DIVISION</b>	
Organizational Chart .....	24
Financial Summary .....	25-26
Program Activity Graph .....	27
Program Activity Table .....	28
Division Summary .....	29
<b>VOCATIONAL SERVICES DIVISION</b>	
Organizational Chart .....	30
Financial Summary .....	31
Program Activity Graph .....	32
Division Summary .....	33
<b>ADMINISTRATIVE SUPPORT DIVISION</b>	
Organizational Chart .....	34
Financial Summary .....	35

## **VISION**

Our Vision is to provide or arrange social, financial, medical and emotional support to the people of Oconto County.

Individuals and families will be treated with respect and dignity, and ensured the right to privacy.

## **MISSION**

Oconto County Department of Health and Human Services  
...promoting healthy and responsible families.

*OCONTO COUNTY DEPARTMENT OF HEALTH AND HUMAN SERVICES*

*BOARD OF DIRECTORS AND COMMITTEES 2008*

Lois Trever, Chair  
P.O. Box 225  
Mountain, WI 54149

Claire Trepanier  
139 Messenger Avenue  
Oconto, WI 54153

Jim Lacourciere  
317 Madison Street  
Oconto, WI 54153

Loretta Shellman, Vice Chair  
P.O. Box 128  
Oconto Falls, WI 54154

Rose Stellmacher  
P O Box 122  
Oconto, WI 54153

Marie Bartz  
3009 Chandler Street  
Abrams, WI 54101

Kathy Gohr  
8811 Gohr Road  
Krakow, WI 54137

Carolyn Barke  
6048 Highway 32  
Gillett, WI 54124

Barb Smith  
146 Wallis Street  
Gillett, WI 54124

*LONG TERM SUPPORT COMMITTEE*

Randy Anderson  
Gerald Beekman  
Michele Braski  
Ruth Carriveau  
Sue Cota  
Kathy Gohr  
William Greasby  
Jon Hanchett  
Debra Konitzer  
Doug Kurek  
Mike Reimer  
Alane Roberts  
Oliver Shallow Jr.  
Claire Trepanier  
Lois Trever

*FAMILY SUPPORT ADVISORY COMMITTEE*

Lynette Bodoh  
Kim Boucher  
James Collins  
Dawn Coors  
Tana Galbreath  
Claire Janssen  
Debra Konitzer  
Jane Nowak  
Michele Olson  
Robin Peters  
Jacquelyn Walske  
Lori Zuber

*W2 COMMUNITY STEERING COMMITTEE*

Carolyn Barke  
Marie Bartz  
Kathy Gohr  
Penny Helmle  
Craig Johnson  
Jim Lacourciere  
Loretta Shellman  
Barb Smith  
Rose Stellmacher  
Claire Trepanier  
Lois Trever

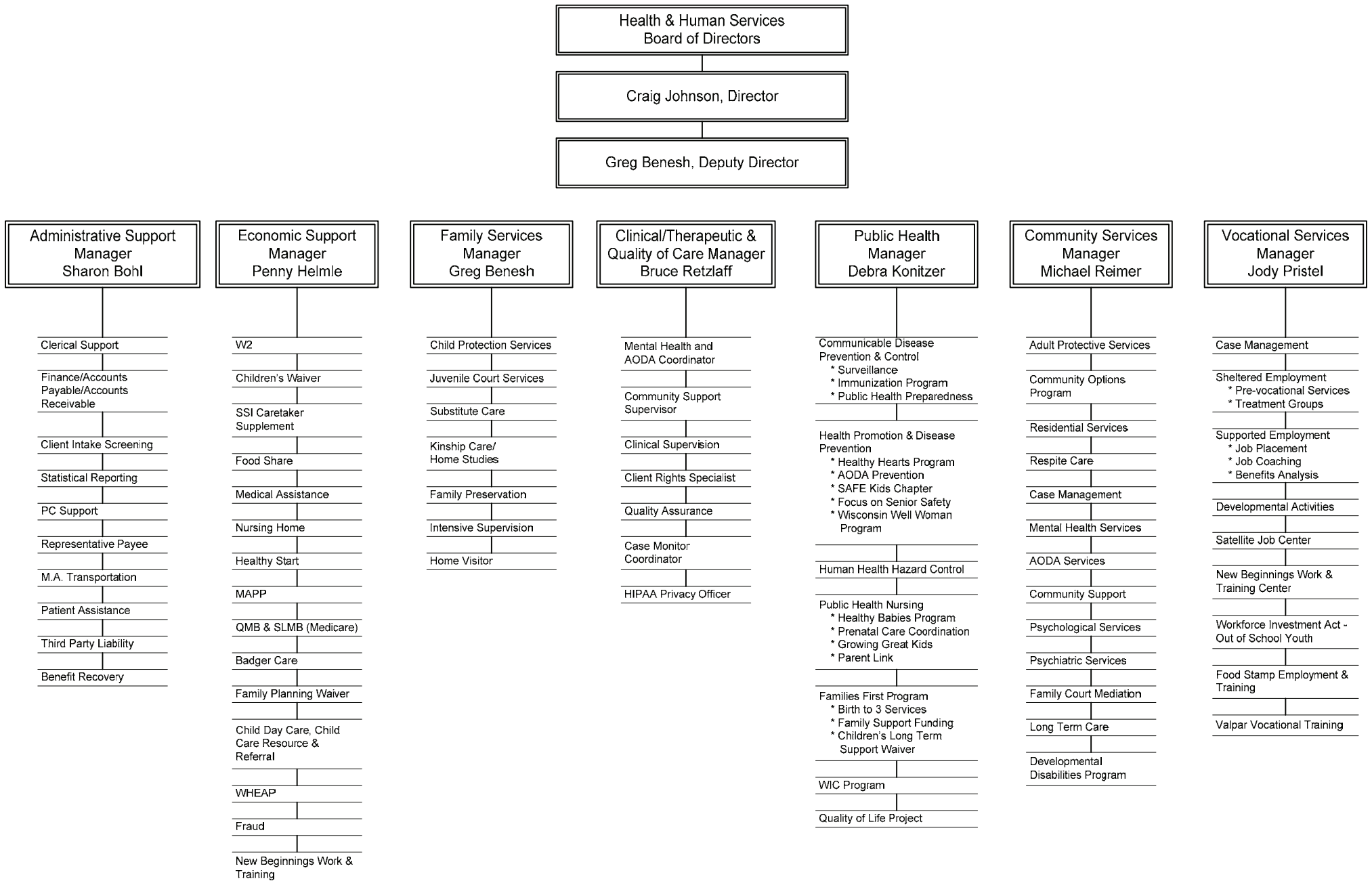
*CLIENT RIGHTS COMMITTEE*

Marie Bartz  
Jim Lacourciere  
Rose Stellmacher

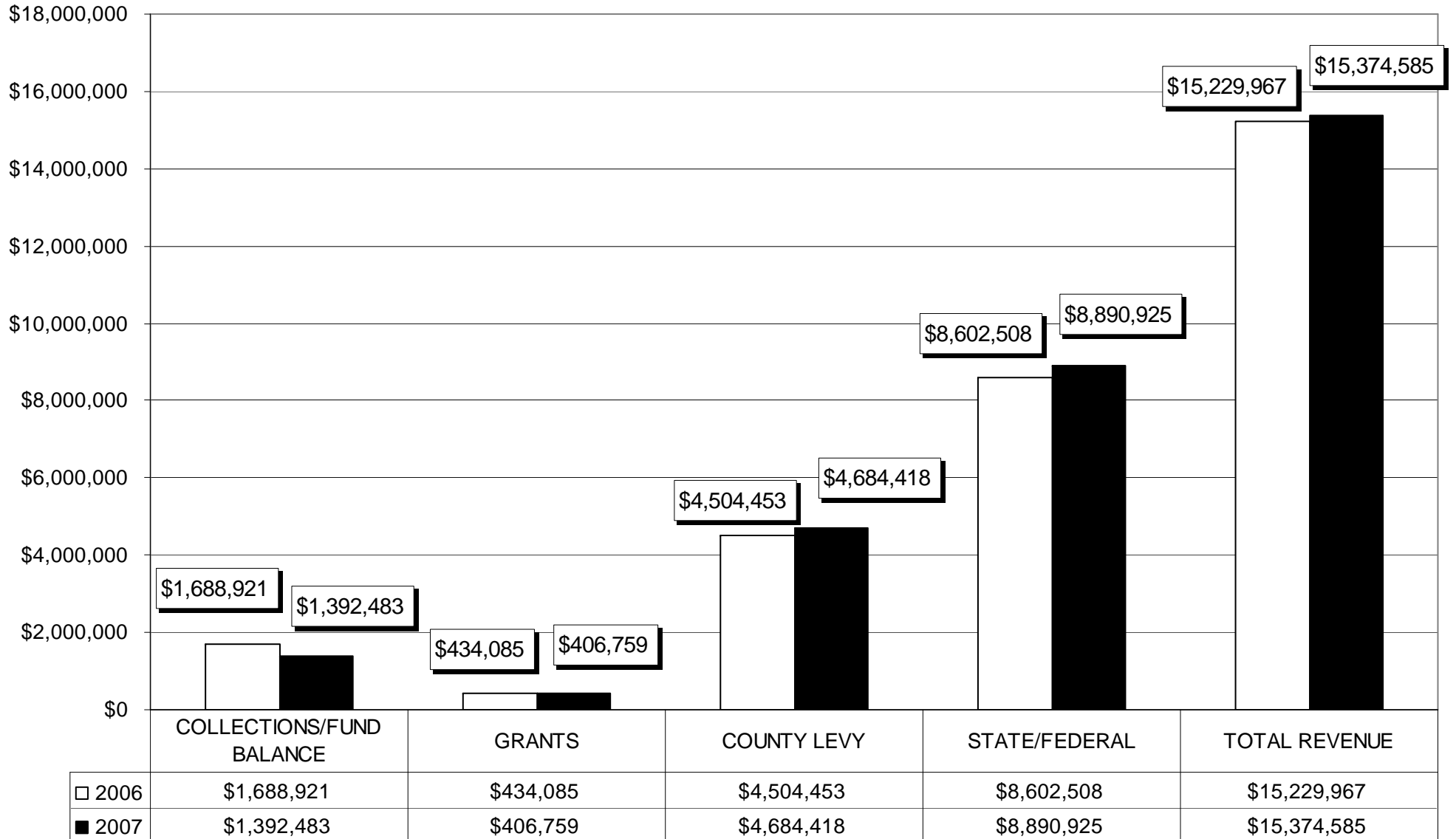
*PERSONNEL COMMITTEE*

Carolyn Barke  
Loretta Shellman  
Barb Smith

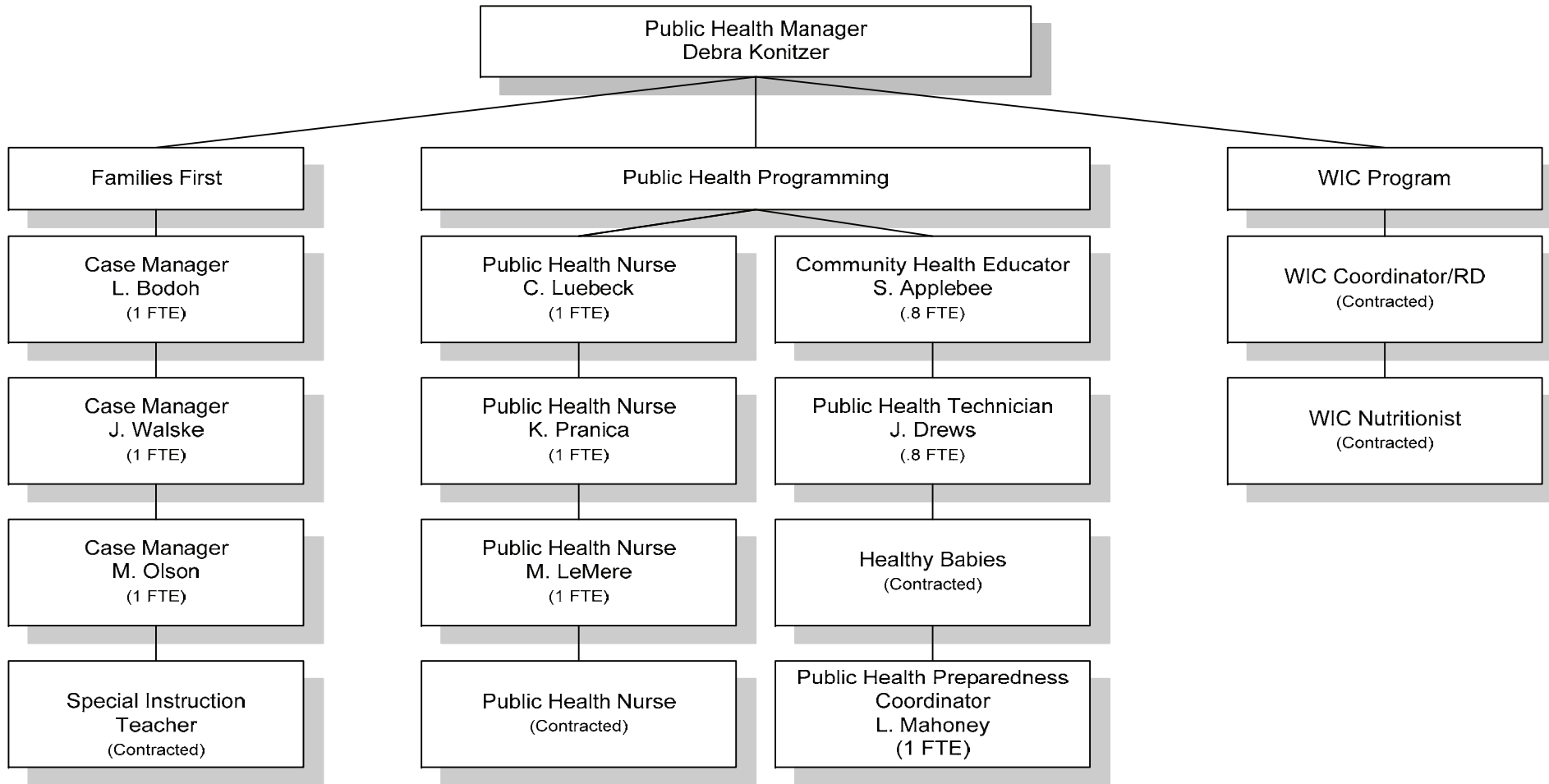
# HEALTH & HUMAN SERVICES PROGRAM ORGANIZATIONAL CHART



**2007 FINANCIAL SUMMARY  
OCONTO COUNTY  
DEPARTMENT OF HEALTH AND HUMAN SERVICES**



# HEALTH & HUMAN SERVICES PUBLIC HEALTH



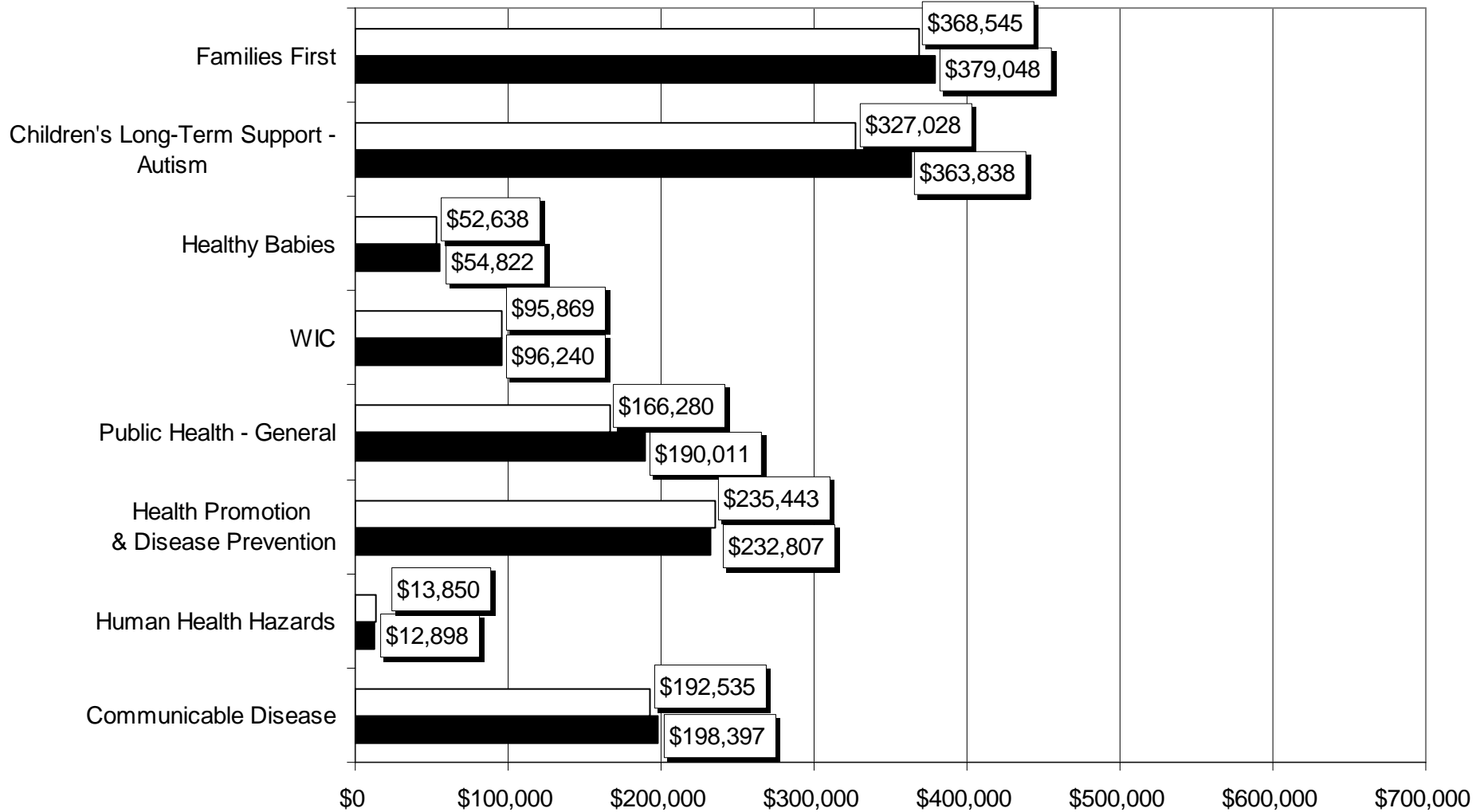
AUTHORIZED COUNTY POSITIONS: 9  
 COUNTY FTE: 8.6  
 CONTRACTED POSITIONS: 5

As of 1/1/2008



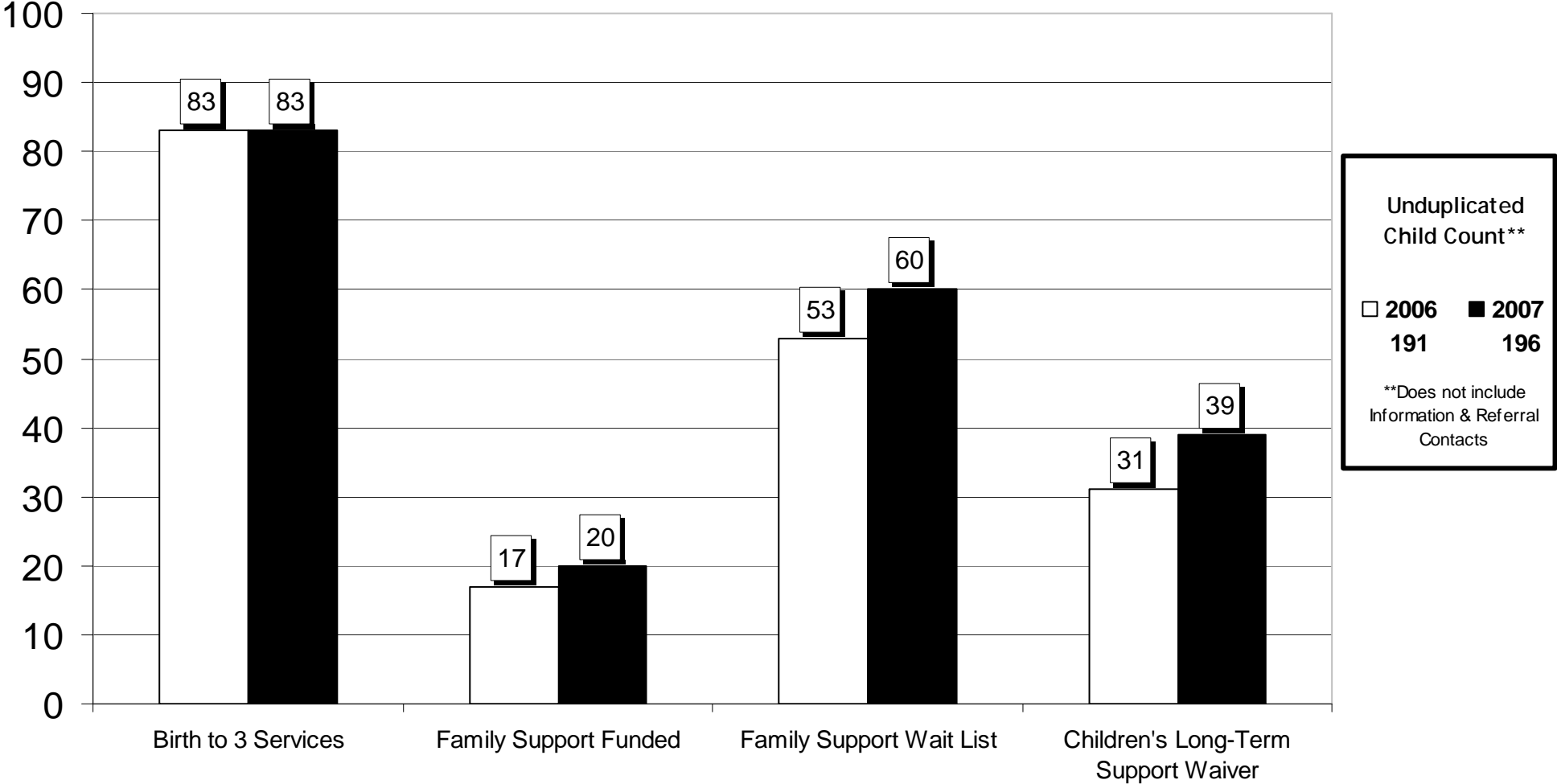
# 2007 FINANCIAL SUMMARY PUBLIC HEALTH DIVISION TOTAL EXPENSES

TOTAL EXPENSES	
□ 2006	■ 2007
\$1,452,188	\$1,528,061



# 2007 Families First Program

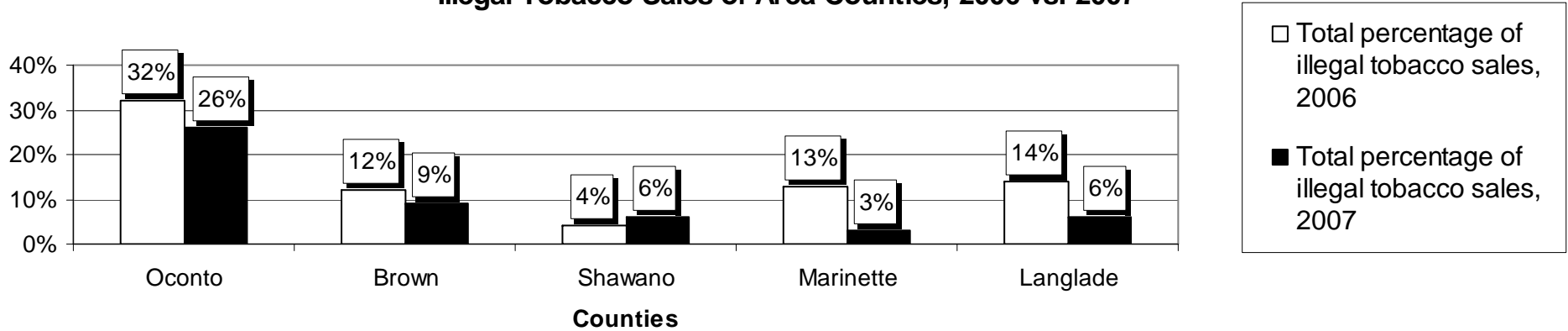
## Number of Children Involved with the Program



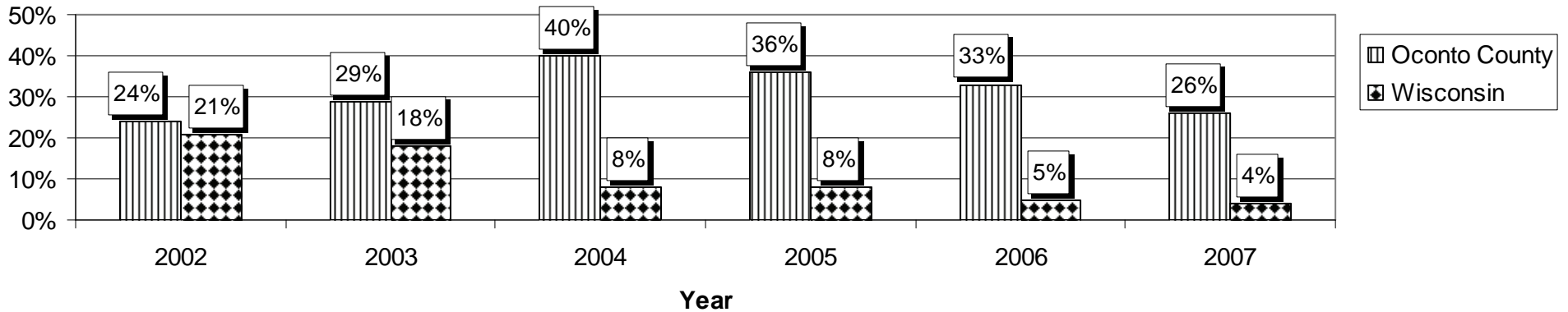
\* 11 children on the Family Support Wait List received emergency or end of year funding (average amount \$702 per child)

## 2007 Wisconsin Wins Tobacco Vendor Compliance Check Activity

### Illegal Tobacco Sales of Area Counties, 2006 vs. 2007



### Comparison of Rates of Illegal Tobacco Sales to Minors in Oconto County vs. Wisconsin, 2002-2007

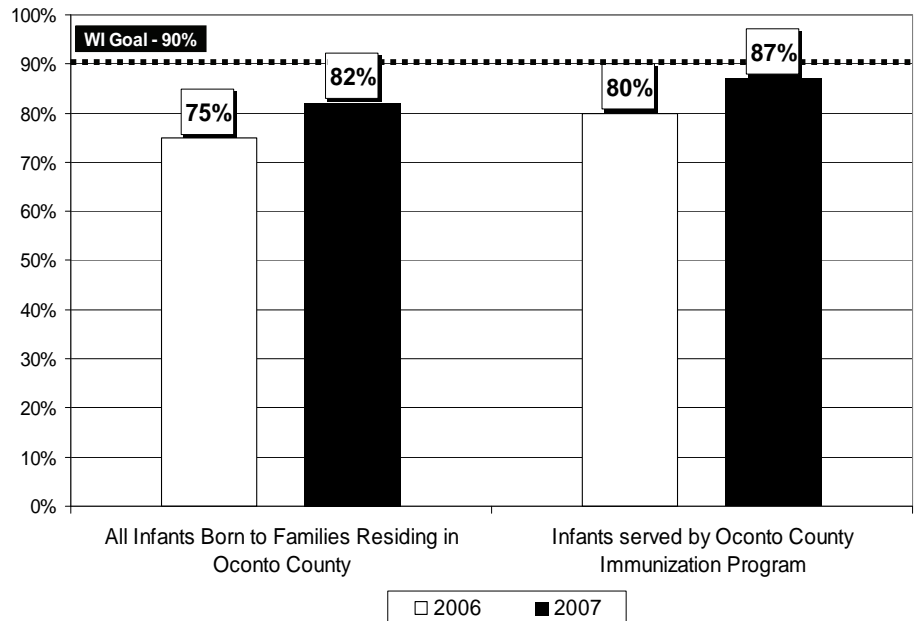


In 2007, Oconto County and the Cities of Oconto and Oconto Falls passed ordinances allowing law enforcement officers in those jurisdictions to write citations to the vendors who sell tobacco illegally to the teens. Other counties that have citation ordinances have lowered their rates of illegal tobacco sales to single digit rates. Oconto County's goal is to experience what other counties have.

2007

## COMMUNICABLE DISEASE PREVENTION & CONTROL

PERCENTAGE OF CHILDREN COMPLETING PRIMARY VACCINATION SERIES BY 24 MONTHS OF AGE



Benchmarks have been established by the Center for Disease Control & Prevention (CDC) to measure the progress towards raising the immunization levels for universally recommended vaccines in the community.

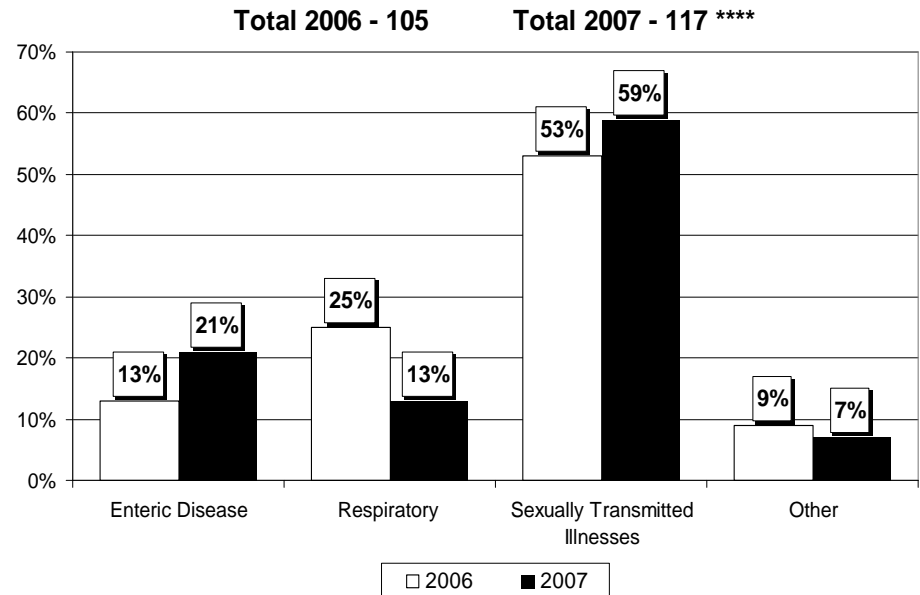
One benchmark Oconto County is striving towards is:

- Infants will have received primary vaccination series (4 DTaP, 3 Polio, 1 MMR, 3 Hib, 3 Hepatitis B and 1 varicella) by 24 months of age.

Examples of population-based strategies implemented:

- Support to health providers & schools to utilize the Wisconsin Immunization Registry (WIR).
- Provide consultation to health providers on vaccination recommendations.

REPORTED SUSPECTED/CONFIRMED COMMUNICABLE DISEASES



Enteric Disease: Camplobacter, Salmonella, Shigella, E.Coli, Cryptosporidium, Yersinia, and Giardia.

Respiratory Disease: Blastomycosis, Pertussis, Tuberculosis, Histoplasmosis, and Mumps.

Sexually Transmitted Illnesses: Gonorrhea, Chlamydia, Syphilis, and Herpes.

Other: Lymes Disease and Hepatitis B & C.

\*\*\*\* 12 reported cases did not meet the case definition after investigated.

## 2007 PUBLIC HEALTH DIVISION SUMMARY

The **Women, Infant and Children (WIC) Program** served an average of 557 clients per month. **Farmer's Market Nutrition Program** was available again this year. WIC participants are given \$15 in WIC checks to purchase fresh fruits, vegetables and herbs grown in Wisconsin from local Farmer's Markets and farm stands. For the 2007 Farmer's Market season, the redemption rate of checks increased 16% over the previous year.

**Public Health Preparedness and Pandemic Influenza Planning** is designed to enhance emergency response readiness and disease awareness. Accomplishments during 2007 included:

- \* A framework to guide preparedness activities created
- \* Increased performance capability by demonstrating accountability to key stakeholders
- \* Continued pandemic influenza planning within the agency and with key stakeholders
- \* Completed two pandemic influenza exercises
- \* Developed an operation plan of community mitigation strategies for pandemic influenza

The **Quality of Life Project** continues to support and monitor several programs, including the following:

- \* Healthy Babies - Oconto County
- \* Family Preservation Program
- \* Parenting Resource Center of Oconto County
- \* Oconto County Healthy Hearts Project
- \* Child Welfare/Reunification Services
- \* Youth Activities such as "Teen Court"
- \* ParentLink

Oconto County **SAFE Kids Chapter** activities:

- \* Child Passenger Safety
  - 299 seats were inspected;
    - ◆ 24% arrived installed correctly (12% in 2006)
    - ◆ 76 seats destroyed, as no longer safe for use
  - 177 seats were distributed to families
    - ◆ 86% distributed to low income families
- \* Delivering Fire Prevention: Awareness of Fire Prevention & Use of Smoke Detectors
  - Partnerships between local firefighters, food establishments, and the SAFE Kids Chapter in 4 communities
  - Served 41 households (approximately 153 people)
  - Smoke detectors
    - ◆ 107 found working
    - ◆ 2 found not working
    - ◆ 2 homes with no smoke detector

The **Wisconsin Well Woman Program (WWWP)** is a breast and cervical cancer screening program for limited income, uninsured or underinsured Wisconsin women ages 45-64.

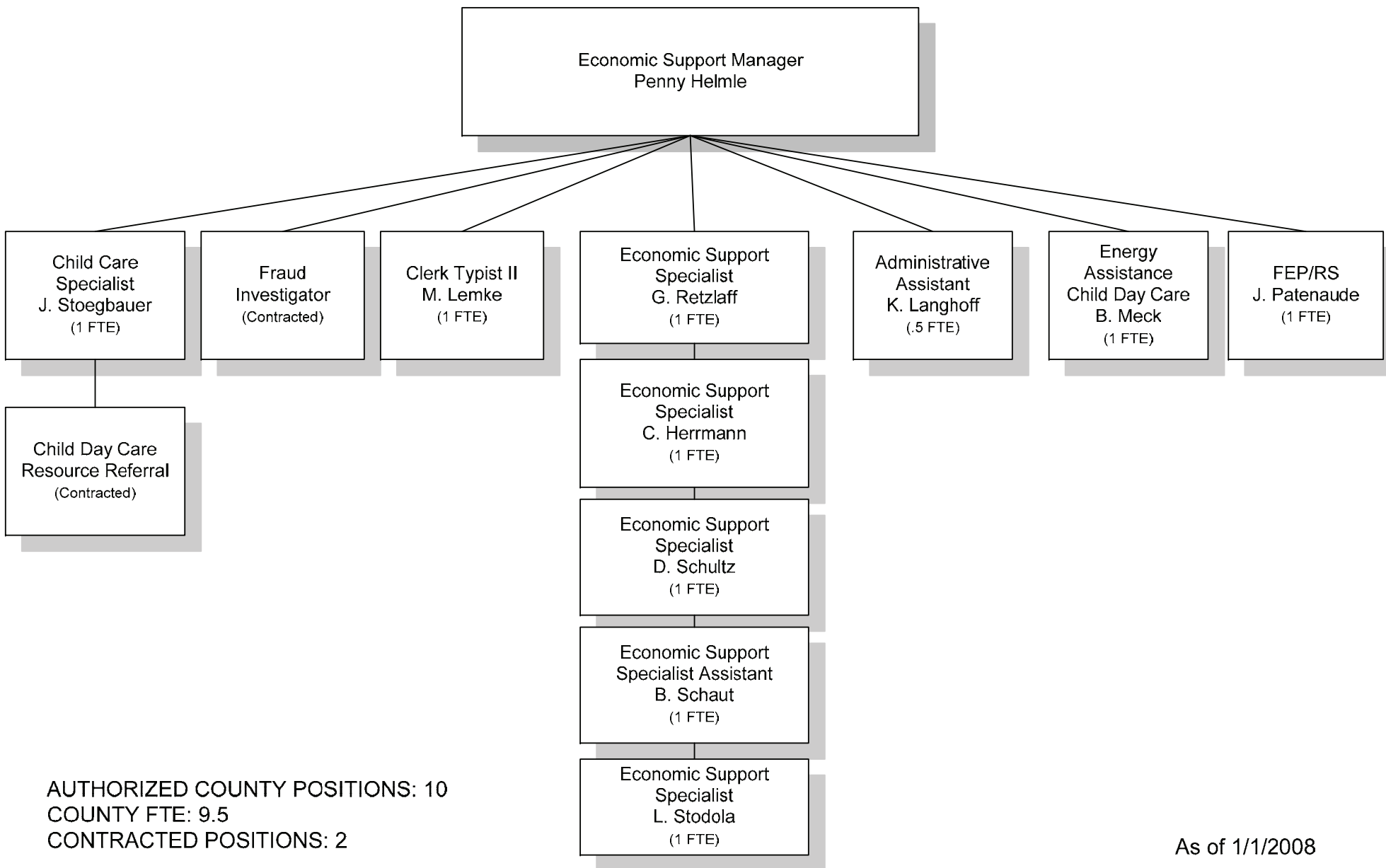
- \* 73 women received screenings
  - Nearly 30% had mammograms with abnormal results requiring further testing (4 women were 40-49 years old)

Investigations of Human Health Hazard/Potential Rabies Exposure reports:

2006—109

2007—131

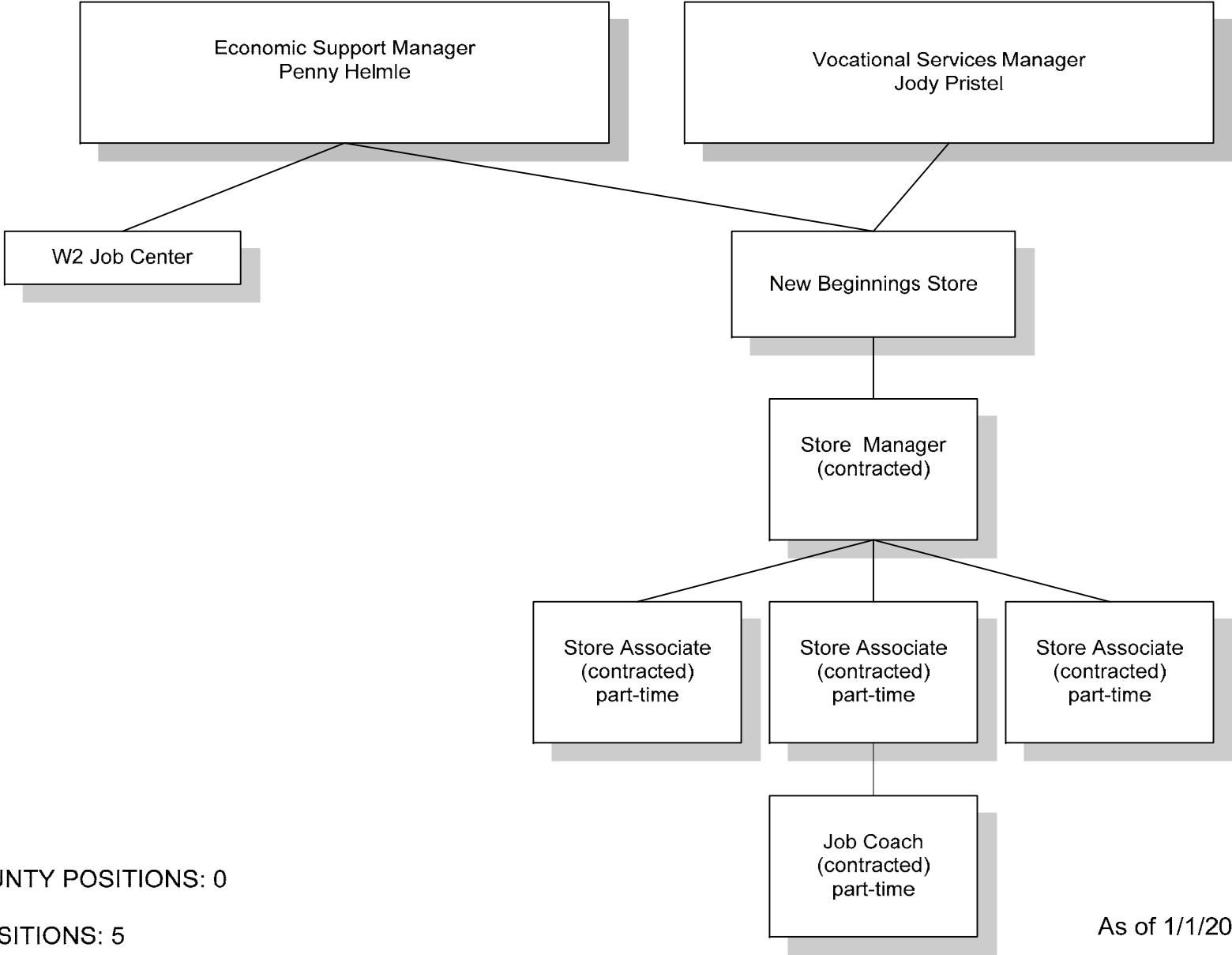
# HEALTH & HUMAN SERVICES ECONOMIC SUPPORT



AUTHORIZED COUNTY POSITIONS: 10  
COUNTY FTE: 9.5  
CONTRACTED POSITIONS: 2

As of 1/1/2008

**HEALTH & HUMAN SERVICES  
ECONOMIC SUPPORT  
W2 JOB CENTER & NEW BEGINNINGS**



AUTHORIZED COUNTY POSITIONS: 0  
COUNTY FTE: 0  
CONTRACTED POSITIONS: 5

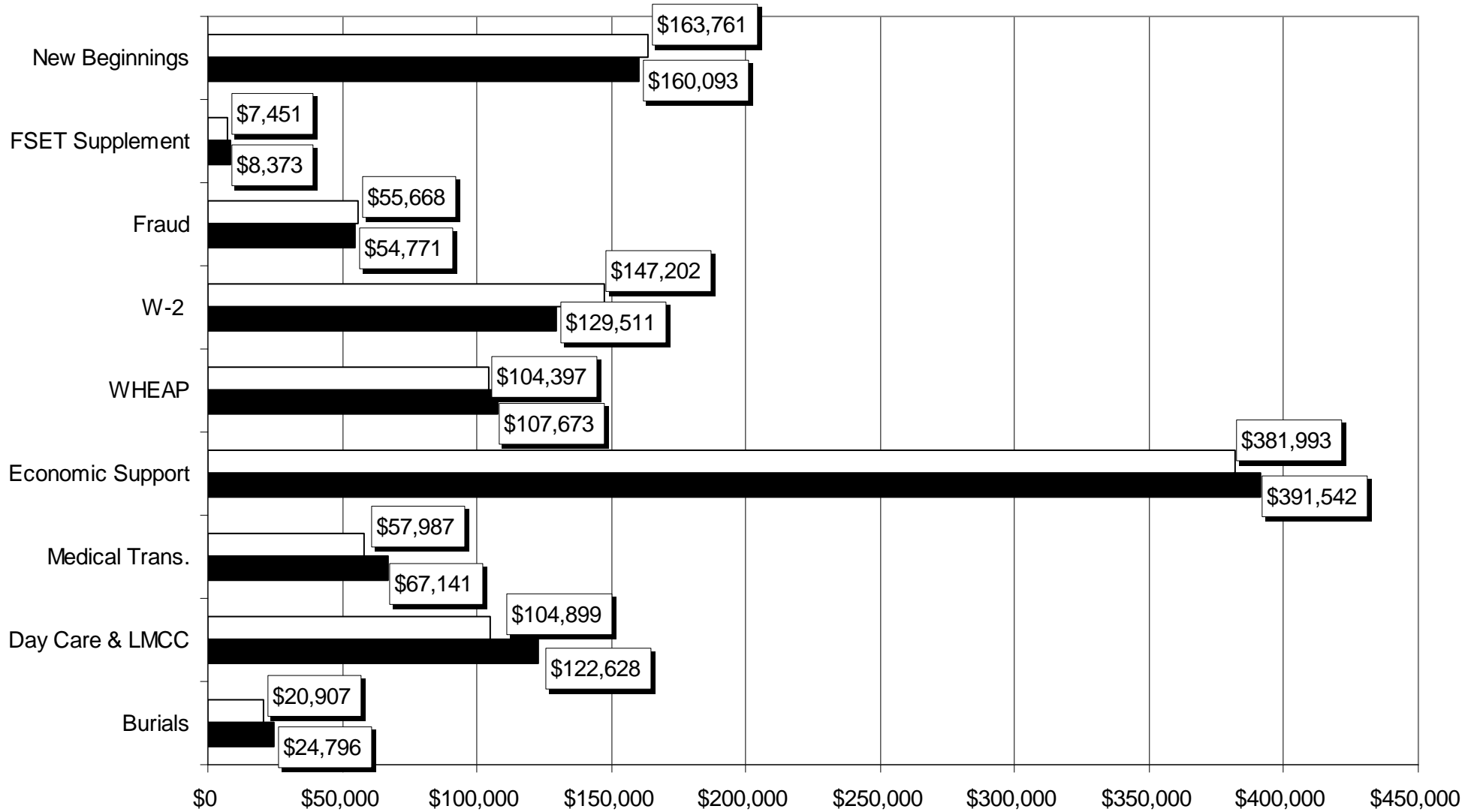
As of 1/1/2008

# 2007 FINANCIAL SUMMARY

## ECONOMIC SUPPORT DIVISION

### TOTAL EXPENSES

TOTAL EXPENSES	
□ 2006	■ 2007
\$1,044,265	\$1,066,528





## WISCONSIN HOME ENERGY ASSISTANCE PROGRAM

2007

	Count	Expenditures
Total Households Applied for Energy Assistance	1,492	
Total Households Paid Energy Assistance	1,292	\$752,121
Total Households Paid Public Benefit Funded Benefits	1,492	\$100,491
Total Crisis Assistance Applications (Excluding Furnace)	375	
Total Households Paid Crisis Assistance (Excluding Furnace)	288	\$153,829
Total Households Paid LIHEAP Funded Crisis Applications (Excluding Furnace)	231	\$118,482
Total Households Paid Public Benefit Funded Crisis Applications	71	\$35,347
Total Heating Unit Repairs Paid	27	\$5,298
Total Heating Unit Replacements Paid	19	\$58,917
Total Heating Unit Repairs and Replacements Paid	46	\$64,215
<b>Total Expenditures</b>		<b>\$1,288,700</b>

## NEW BEGINNINGS TRAINING SERVICES

### STATISTICS FOR 2007

Twenty-five individuals were referred for training at the store.

- \* 16 individuals were New View clients
  - \* 4 have successfully completed the training and have been referred for Supported Employment
  - \* 10 are continuing their training at the store
  - \* 2 are employed in the community
  
- \* 3 individuals were FSET clients
  - \* 1 is in job search
  - \* 2 are employed in the community
  - \* (90 FSET individuals utilized the job center at New Beginnings for job club and various services)
  
- \* 6 individuals were DVR clients
  - \* 4 are employed in the community
  - \* 2 are in job search

NEW BEGINNINGS REFERRALS—2007		
MONTH	NUMBER OF PEOPLE	DOLLAR AMOUNT
January	3	\$48.55
February	1	11.97
March	0	0.00
April	6	147.95
May	3	47.48
June	1	23.20
July	0	0.00
August	8	126.95
September	2	29.95
October	3	24.12
November	11	164.23
December	0	0.00
<b>TOTAL 2007</b>	<b>38</b>	<b>\$624.40</b>

YTD TOTALS	NUMBER OF PEOPLE	DOLLAR AMOUNT
May 2001 - Dec 2007	551	\$7086.03

## 2007 FRAUD STATISTICS

54 Medical Assistance Overpayments =	\$74,226.37
41 Food Stamp Overpayments =	\$25,124.00
9 Child Daycare Overpayments =	\$18,612.15
10 Energy Assistance =	\$1,031.00
Total =	<hr/> <b>\$118,993.52</b>

\* Number of Fraud Referrals - 94

\* Number of Error Prone - 6

\* Number of Citations Issued - 24

\* Prosecution Referrals - 9

\* Contract Began - January 1999 (approximately)

## 2007 W2/ECONOMIC SUPPORT SERVICES DIVISION SUMMARY

### NEW BEGINNINGS

- \* Celebrated 6 years in operation in May 2007. Sales training and daily reports implemented to increase sales revenues. Fundraising efforts are a continuing process.

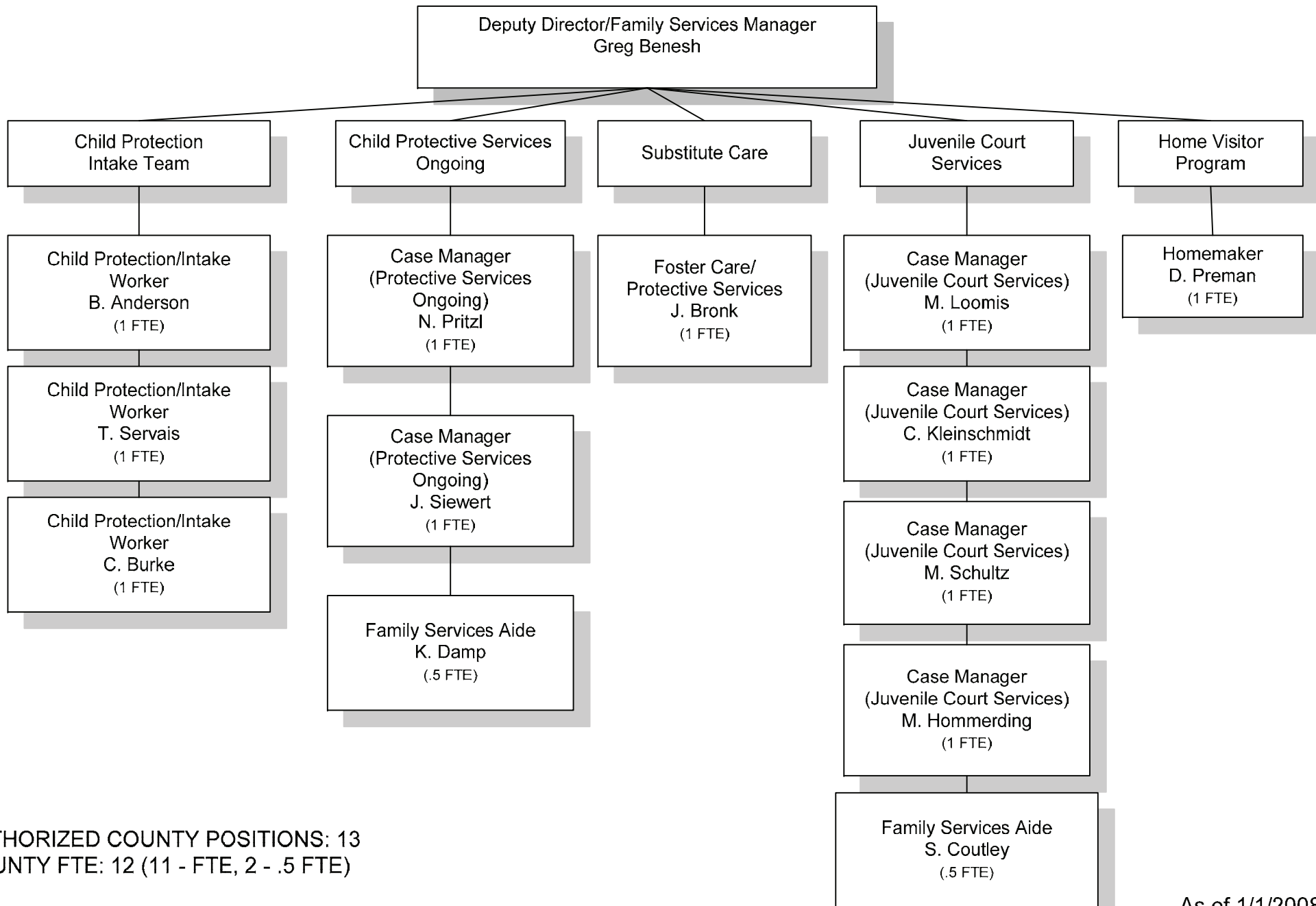
### W2/FOOD STAMPS/MEDICAL ASSISTANCE/CHILD CARE

- \* ESS caseload rose to a high of 2,455 cases by December 2007.
- \* All cases are on the electronic case file system. No paper case files exist.

### FRAUD

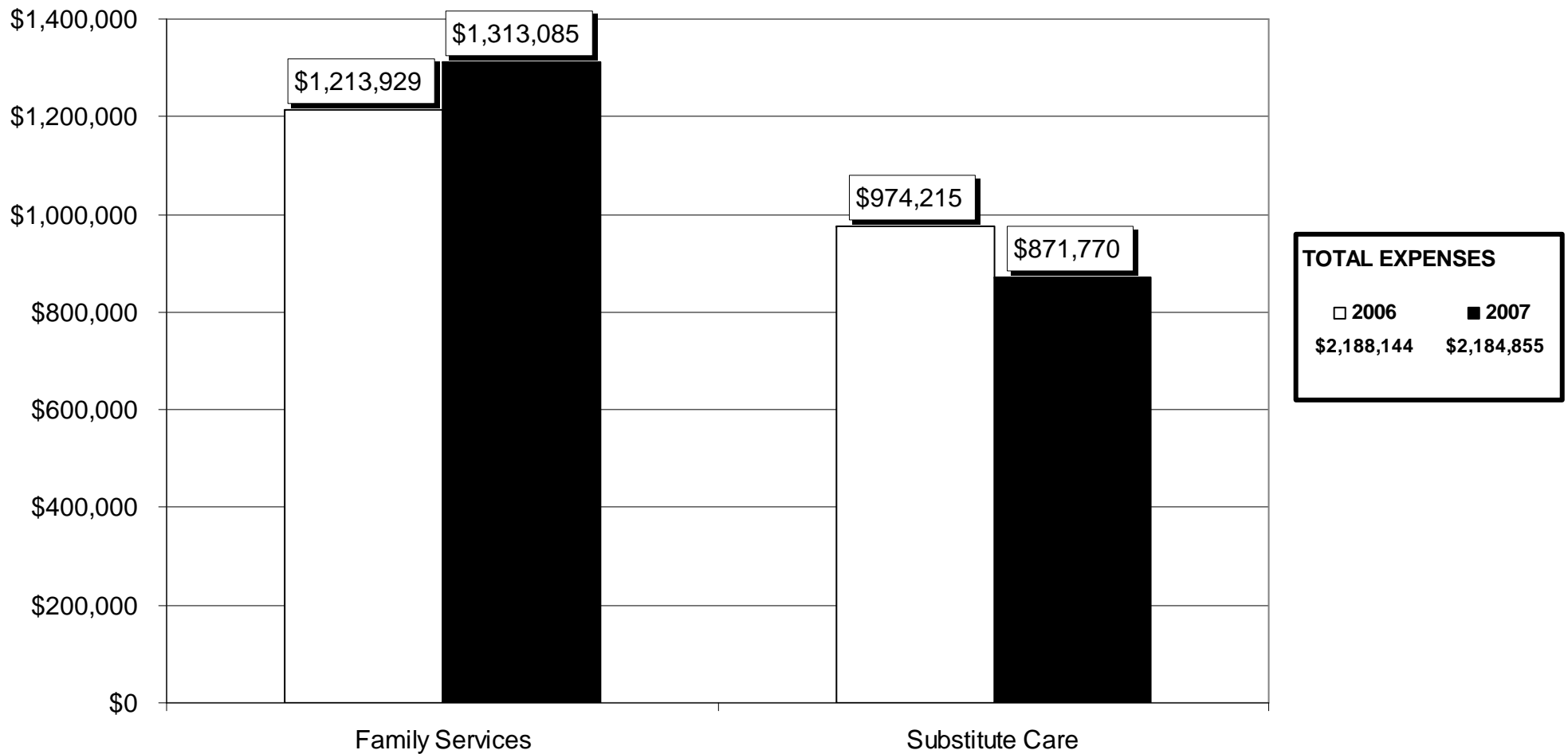
- \* Billed over \$118,993 in fraud claims
- \* Dawn Schultz, Economic Support Worker, received the WAPF Recognition Award in 2007.

# HEALTH & HUMAN SERVICES FAMILY SERVICES



AUTHORIZED COUNTY POSITIONS: 13  
 COUNTY FTE: 12 (11 - FTE, 2 - .5 FTE)

**2007 FINANCIAL SUMMARY  
FAMILY SERVICES DIVISION  
TOTAL EXPENSES**



## Median Length of Stay—2007

	Median Length of Stay (months) 2006	Median Length of Stay (months) 2007
Child Protective Services (CPS) Family— Oconto County	24.5	12.4
Child Protective Services (CPS) Family— State of Wisconsin	13.8	14.2
CPS Family/Juvenile Justice— Oconto County	26.5	28.65
CPS Family/Juvenile Justice— State of Wisconsin	13.5	13.1
Juvenile Justice— Oconto County	33.9	11.5
Juvenile Justice— State of Wisconsin	8.5	8.0

\* State of Wisconsin Performance Expectation (24 Months or fewer)

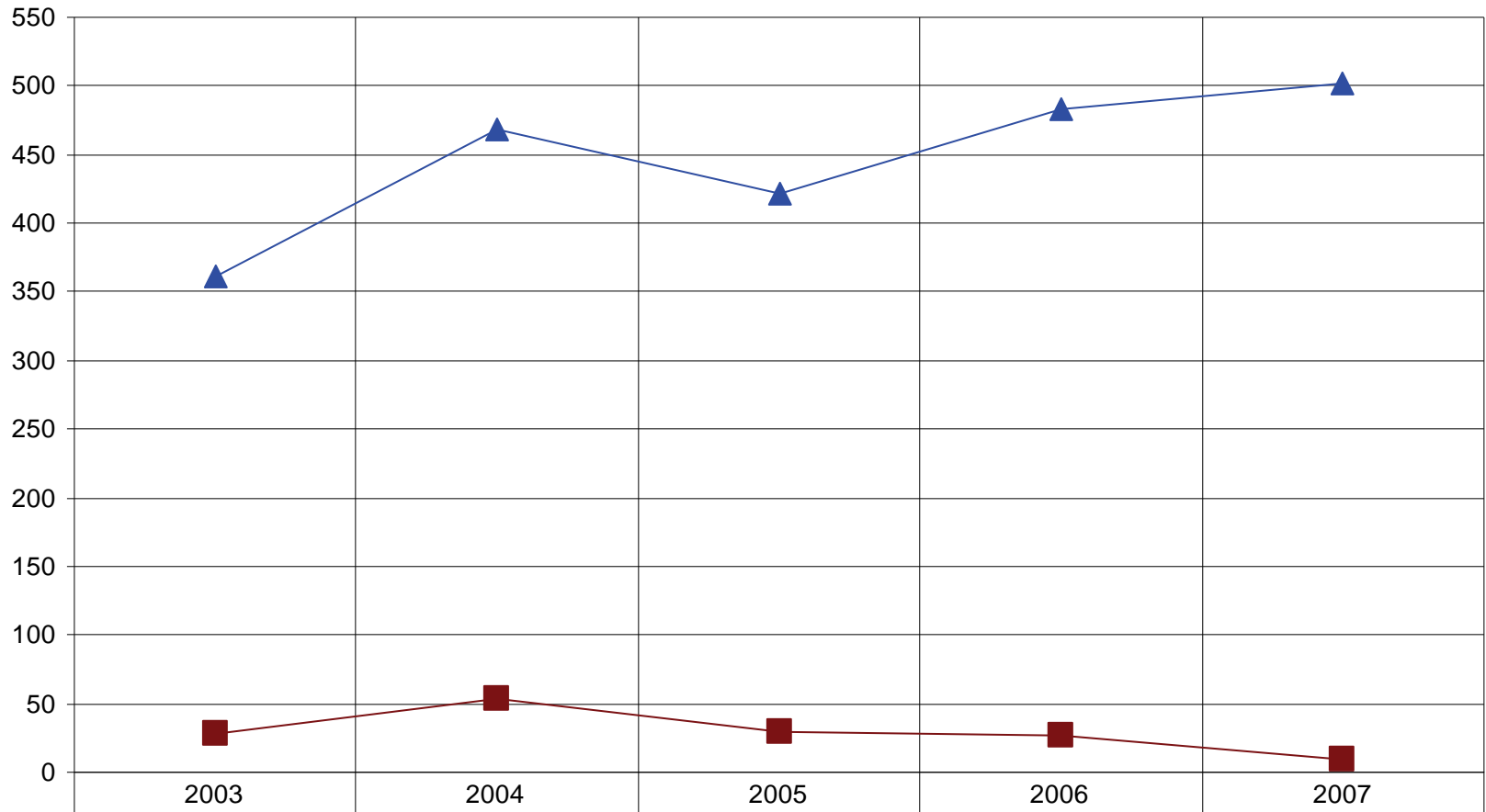
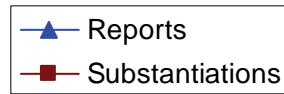


### Placement Stability—2007

	1 or 2 Placement Settings	3 Placement Settings	4 Placement Settings	5 or More Placement Settings	Total (Children)
Child Protective Services (CPS) Family—Oconto County	93.33% (14)	6.67% (1)	0% (0)	0% (0)	15
Child Protective Services (CPS) Family—State of Wisconsin	85.5%	9.13%	3.1%	2.27%	—
CPS Family/Juvenile Justice—Oconto County	66.67% (8)	8.33% (1)	8.33% (1)	16.67% (2)	12
CPS Family/Juvenile Justice—State of Wisconsin	74.97%	12.25%	5.8%	6.98%	—
Juvenile Justice—Oconto County	73.33% (11)	6.67% (1)	6.67% (1)	13.33% (2)	15
Juvenile Justice—State of Wisconsin	76.42%	11.79%	5.47%	6.31%	—

\* Child and Family Services Review National Standard (86.7% or more in 1 or 2 placement settings)

## CHILD ABUSE AND NEGLECT REPORTS 2003 - 2007



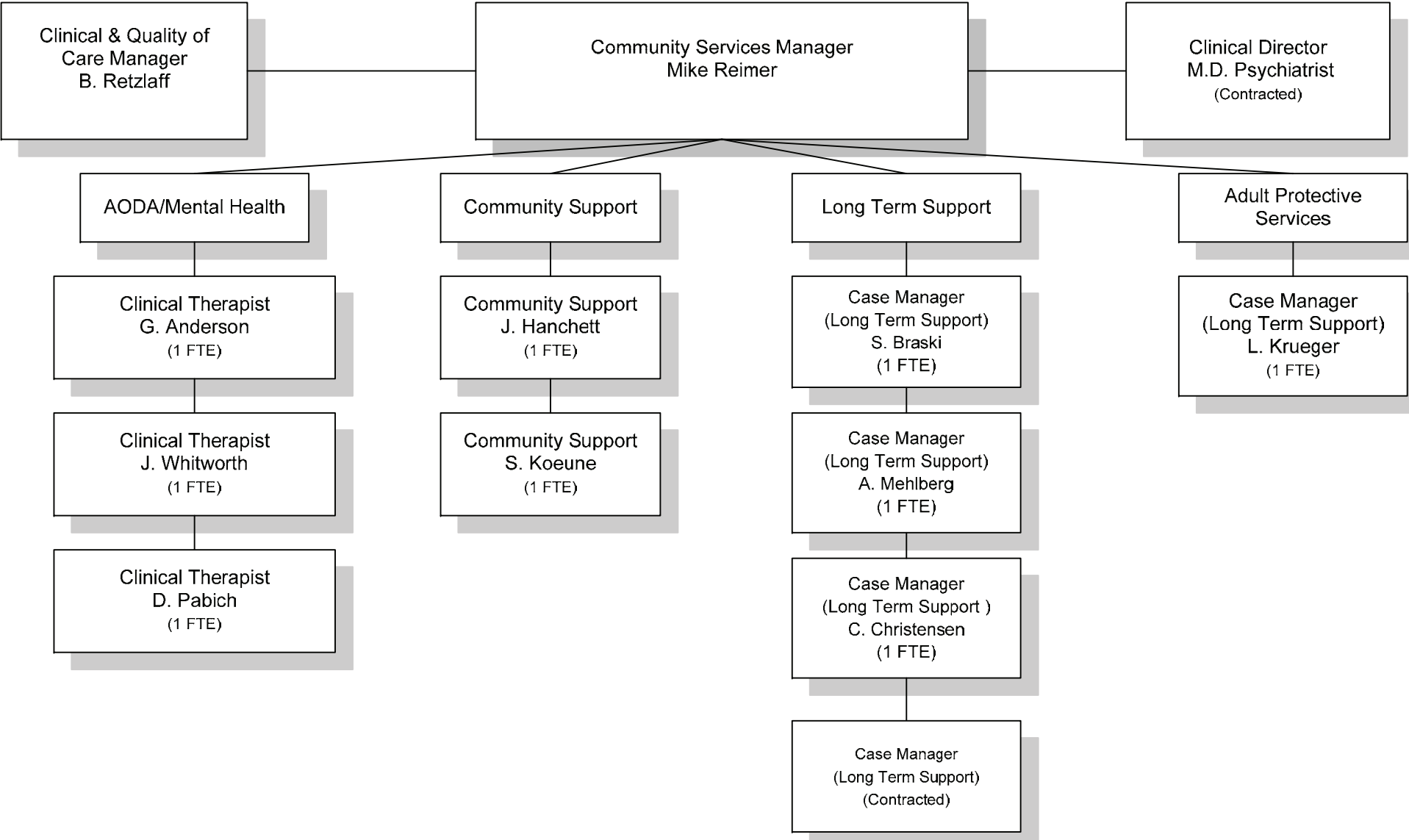
—▲— Reports	361	468	421	483	502
—■— Substantiations	28	53	29	27	10*

\* CPS no longer investigates or substantiates non-caregiver reports.

## 2007 FAMILY SERVICES DIVISION SUMMARY

	2006	2007
<b>JUVENILE COURT</b>		
* Number of Referrals	253	222
* Counsel and Release	81	67
* Formal Supervision	84	77
* Other Dispositions	88	78
* Average Caseload Size	35	42
<b>INTENSIVE SUPERVISION PROGRAM</b>		
* Number Served	17	15
* Placed Out of Home	3	1
<b>KINSHIP CARE</b>		
* Number Served	33	35
* Waiting List	0	1
<b>HOME VISITOR PROGRAM</b>		
* Number of Families	53	38
* Individuals Served	179	142
* Home Visits	736	532

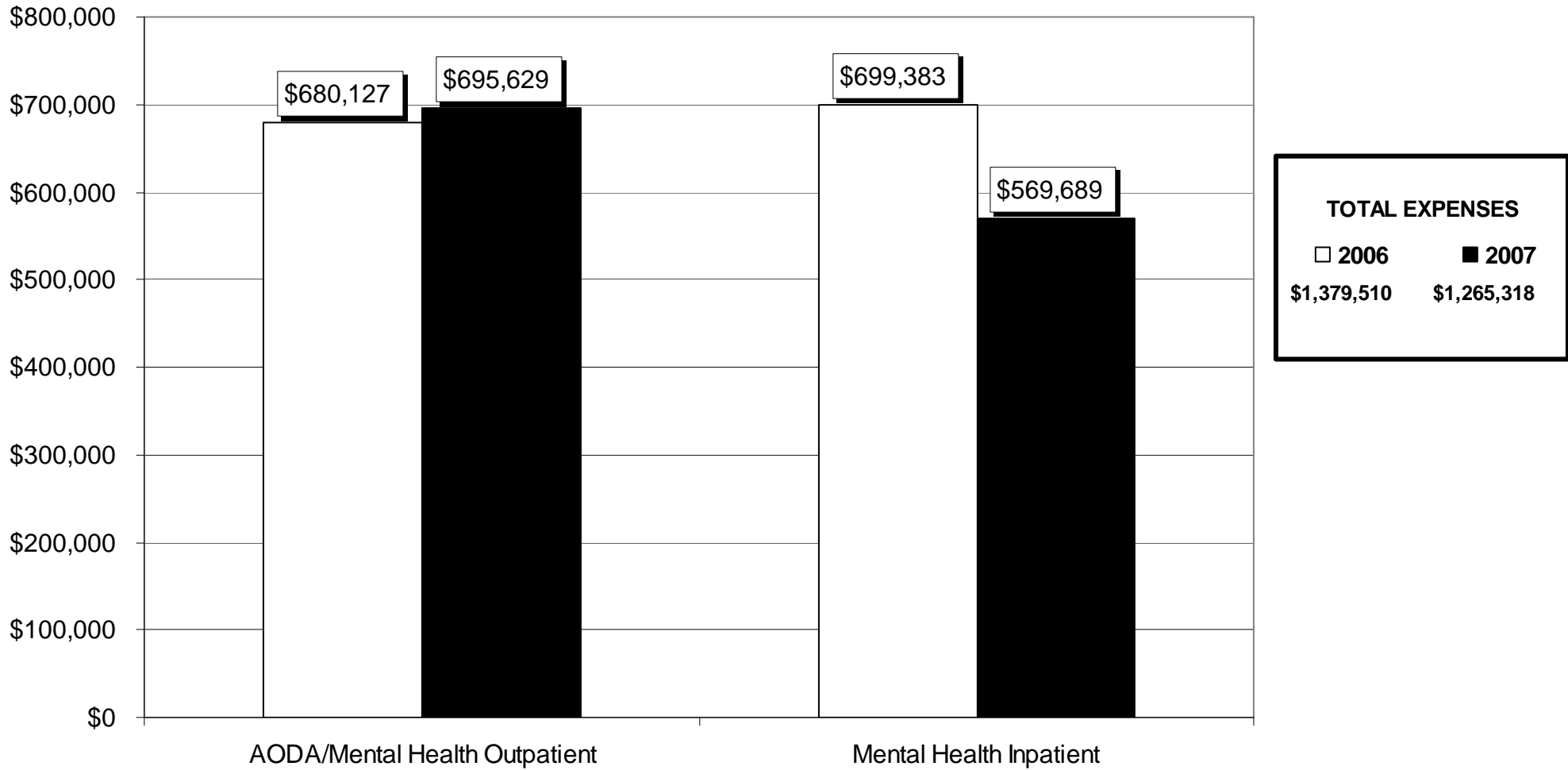
# HEALTH & HUMAN SERVICES COMMUNITY SERVICES



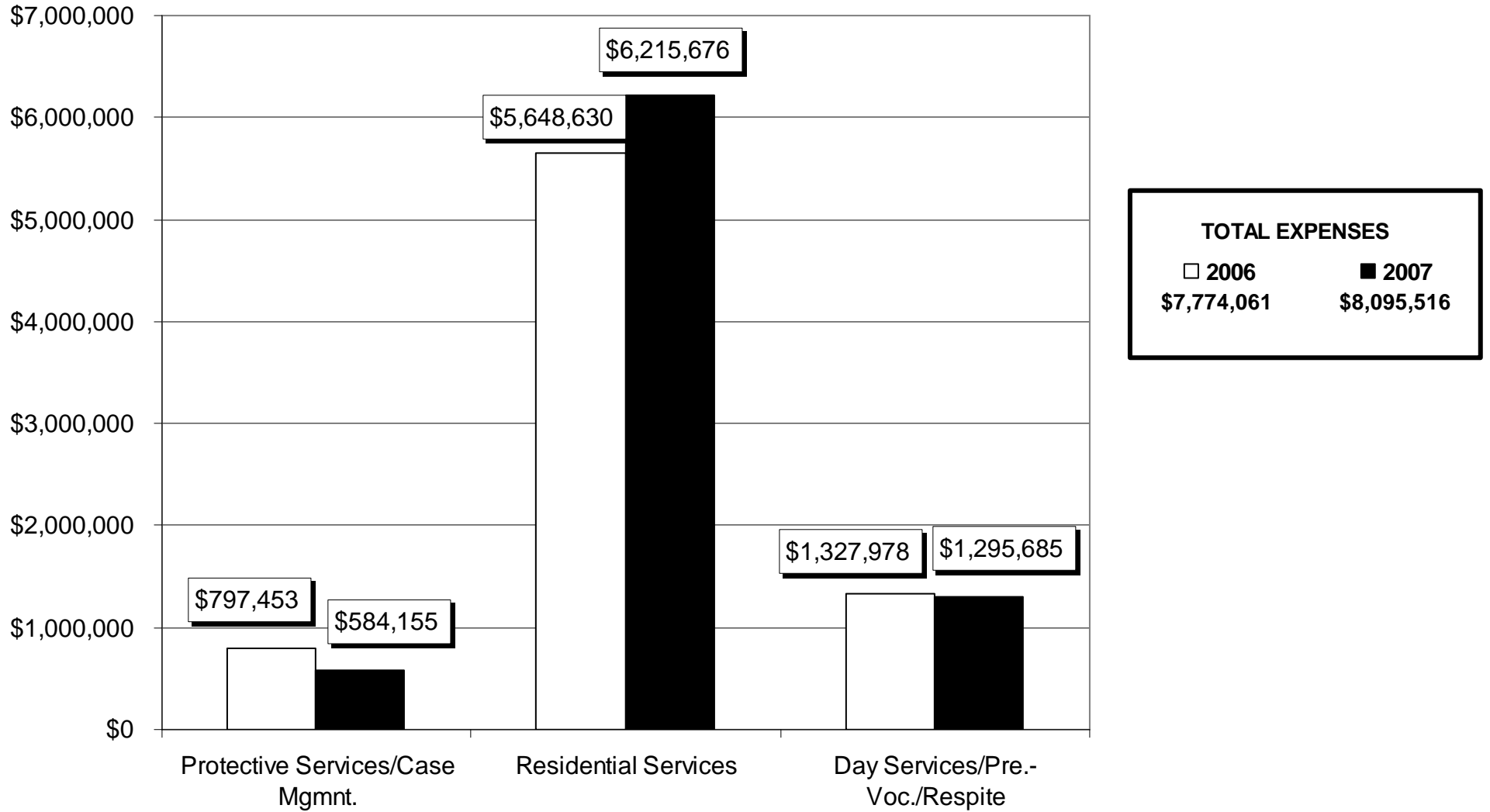
AUTHORIZED COUNTY POSITIONS: 9  
 COUNTY FTE: 9  
 CONTRACTED POSITIONS: 2

As of 1/1/2008

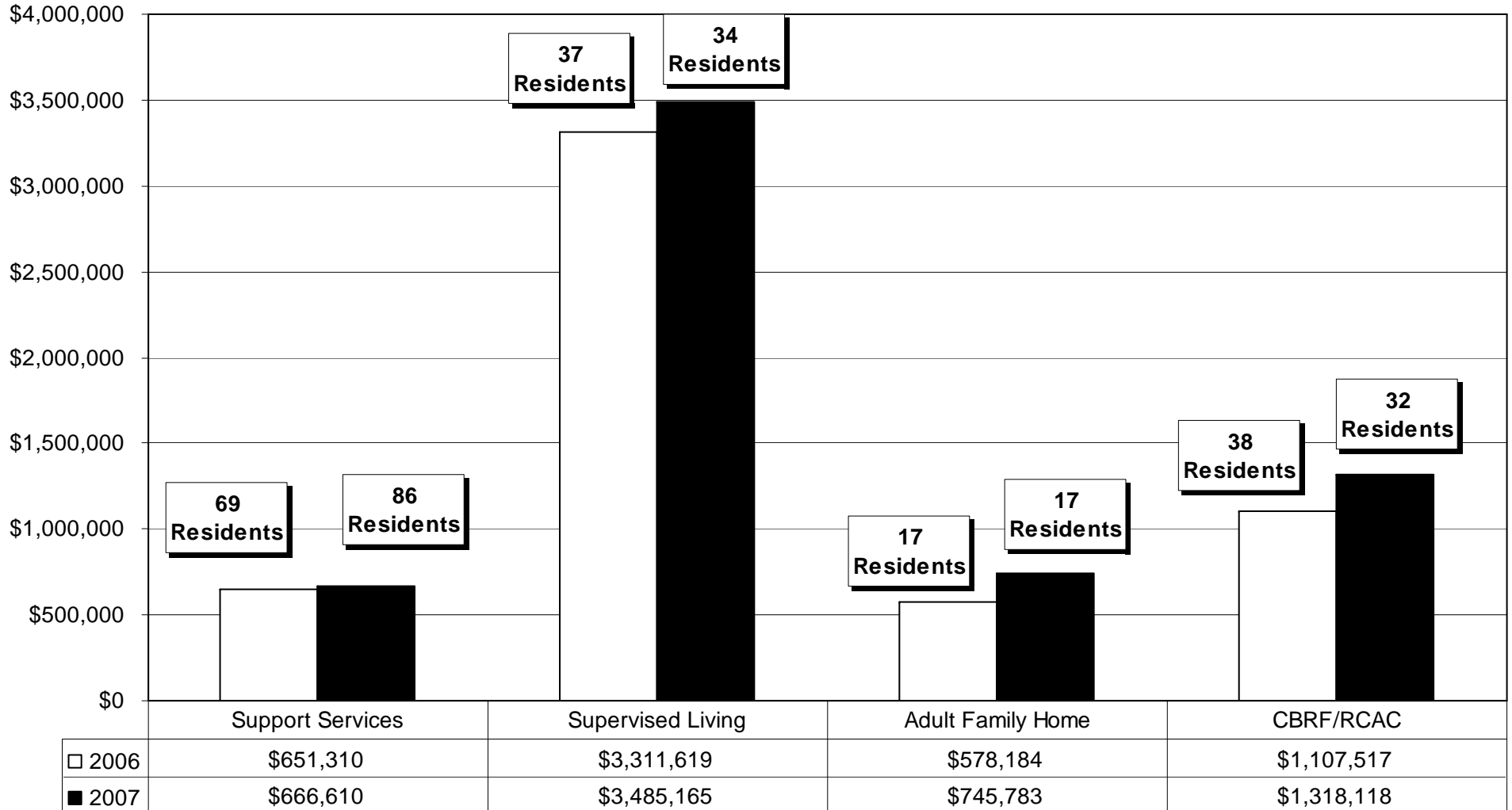
# 2007 FINANCIAL SUMMARY COMMUNITY CLINICAL SERVICES TOTAL EXPENSES



**2007 FINANCIAL SUMMARY**  
**COMMUNITY LONG TERM SUPPORT SERVICES**  
**TOTAL EXPENSES**



# RESIDENTIAL SERVICES



**2006 TOTAL EXPENSES - \$5,830,564**

**2007 TOTAL EXPENSES - \$6,215,676**

## 2007 INPATIENT CARE

	Number		Average Stay		Cost	
	2006	2007	2006	2007	2006	2007
Mental Health Short Term *	71	87	6 days	5 days	\$249,298	\$246,491
Mental Health Long Term	6	2	112 days	214 days	\$450,085	\$323,198
Total	77	89			\$699,383	\$569,689
Alcohol and Other Drugs (AODA)	14	14	21 days	30 days	\$36,129	\$58,142

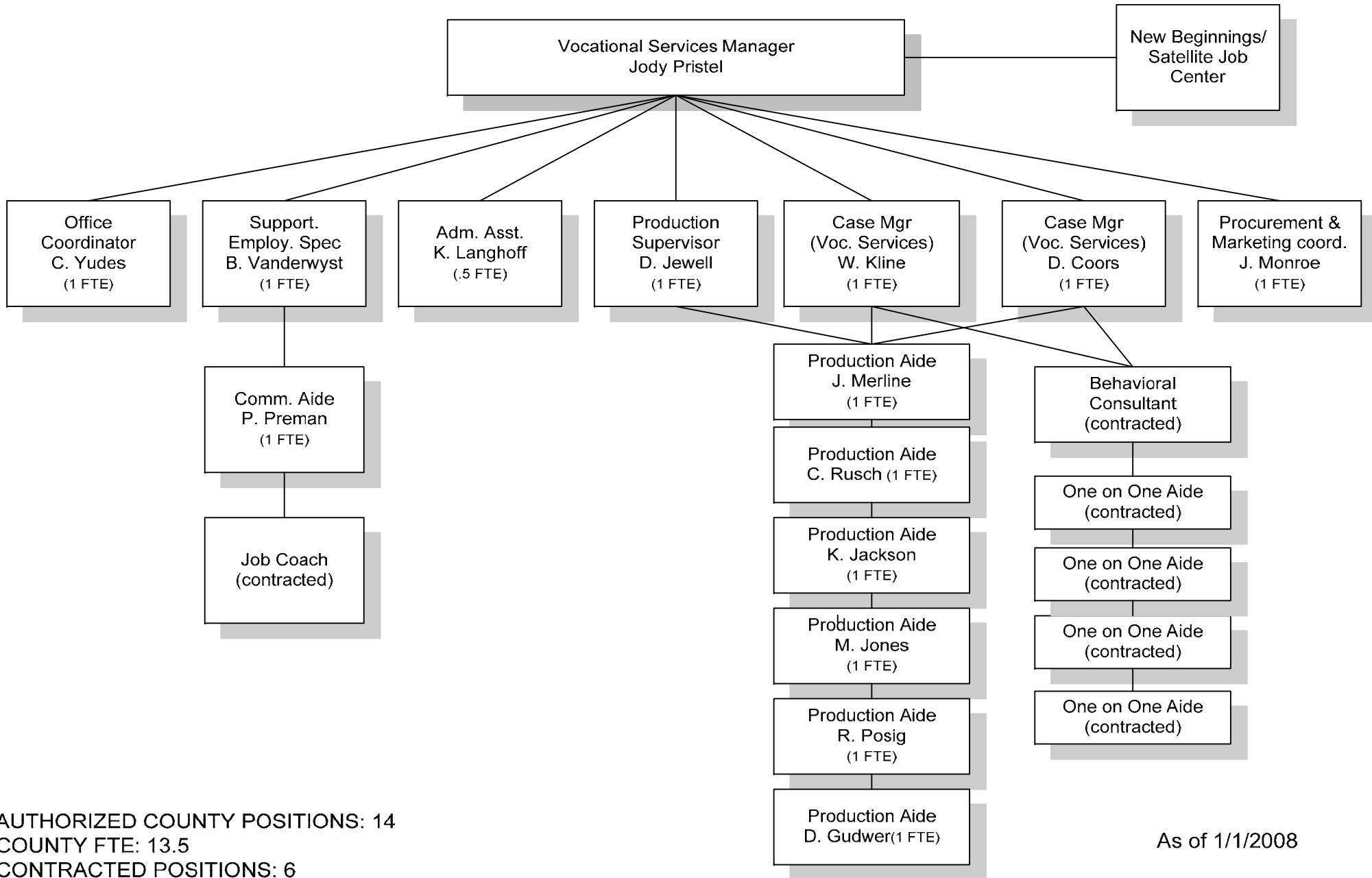
\* Short term inpatient - under 30 days



## 2007 COMMUNITY SERVICES DIVISION SUMMARY

	<b>2006</b>	<b>2007</b>
<b>OUTPATIENT CLINIC</b>		
* Number of Clients	489	461
<b>OWI (Operating While Intoxicated)</b>		
* Number of Assessments	187	160
<b>AODA INTENSIVE OUTPATIENT</b>		
* Number of County Paid Clients	15	14
<b>FAMILY COURT MEDIATION</b>		
* Number of Referrals	25	20
* Sessions (excluding orientation)	30	25
<b>COMMUNITY OPTIONS PROGRAM AND MEDICAID WAIVER FUNDING</b>		
* Number of funded services for elderly and individuals with disabilities	158	169
* Average cost per day	\$135.00	\$131.00
* Private pay nursing home cost per day	\$178.00	\$186.00

# HEALTH & HUMAN SERVICES VOCATIONAL SERVICES

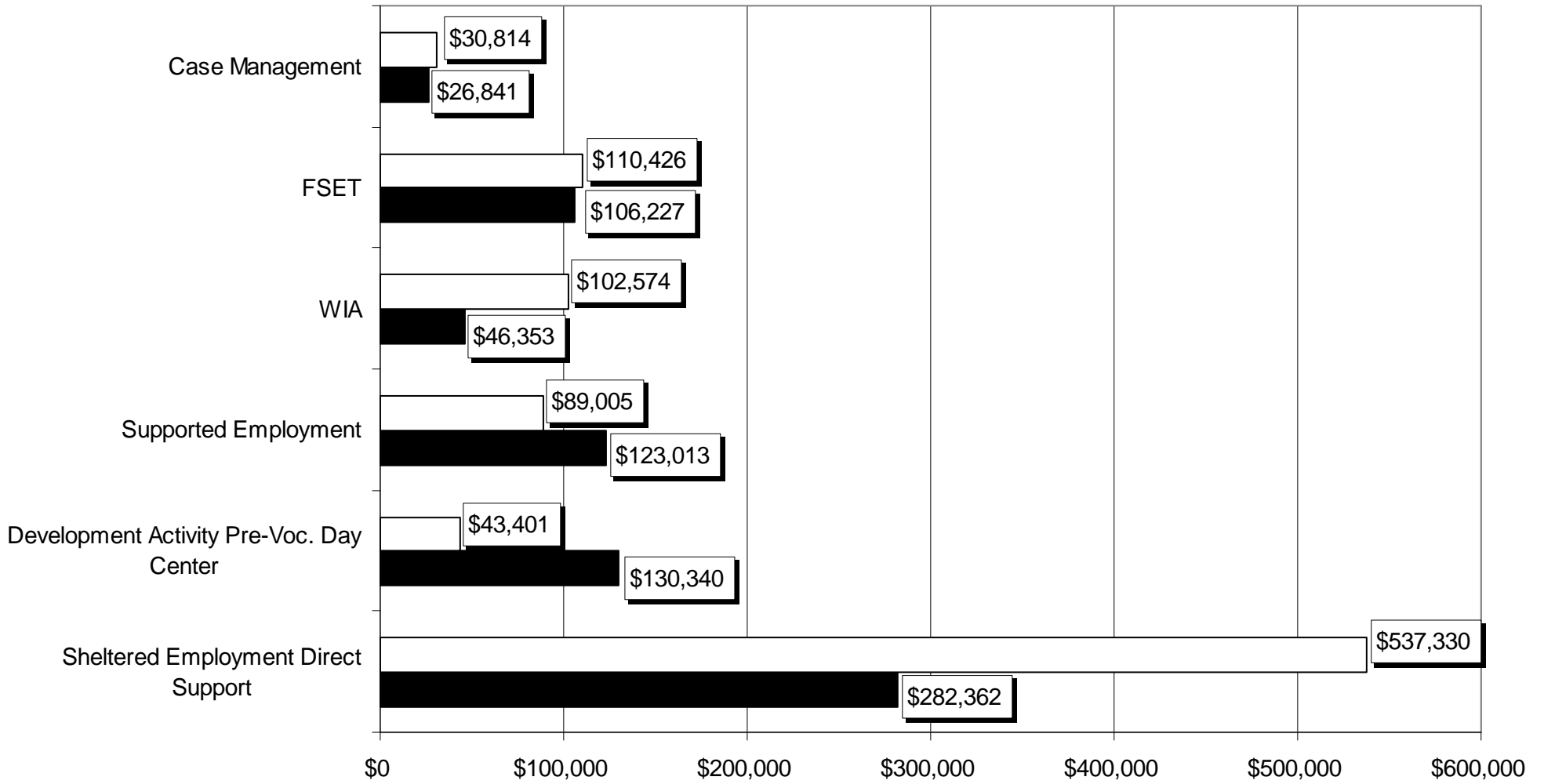


AUTHORIZED COUNTY POSITIONS: 14  
 COUNTY FTE: 13.5  
 CONTRACTED POSITIONS: 6

As of 1/1/2008

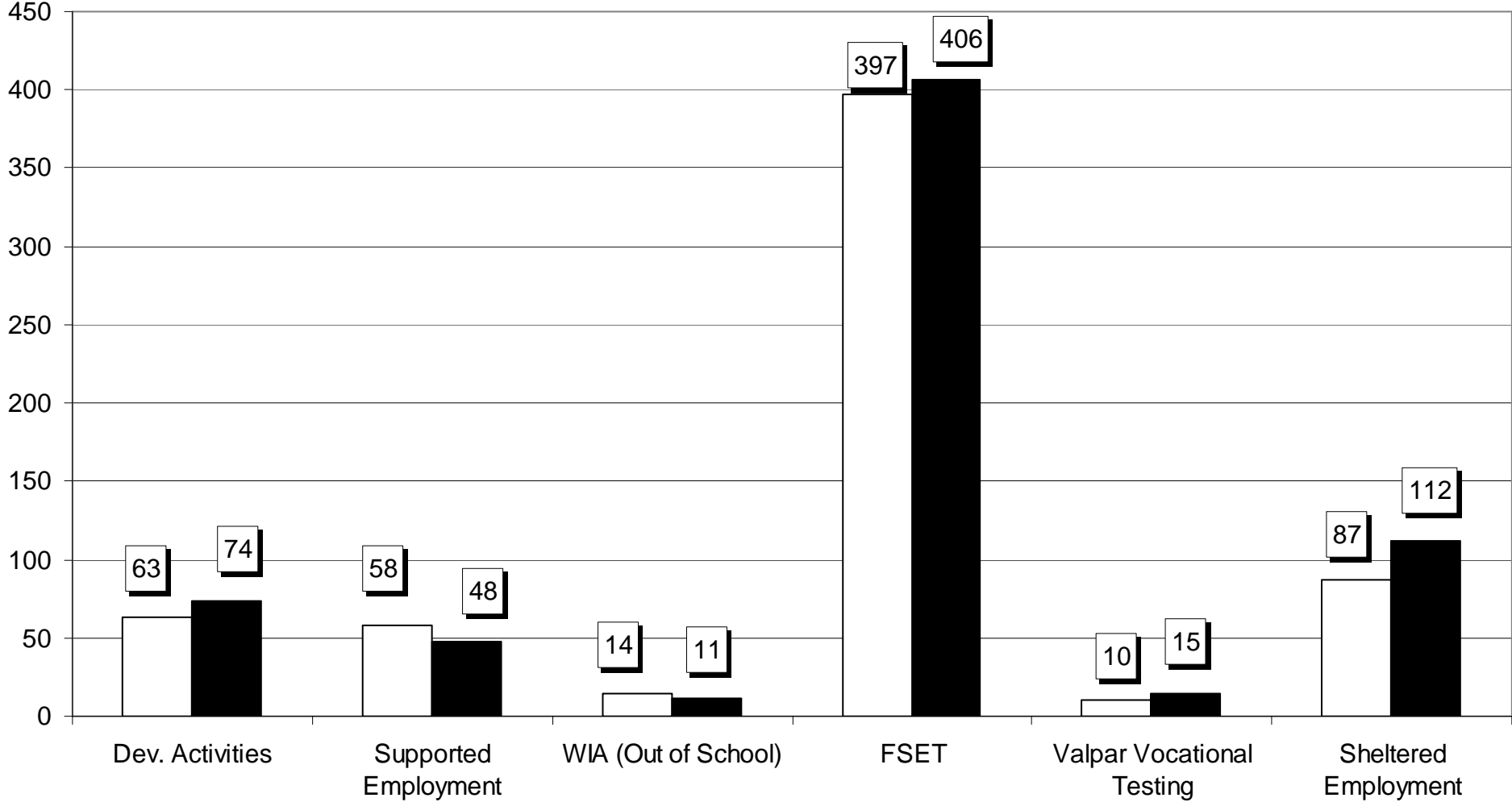
# 2007 FINANCIAL SUMMARY VOCATIONAL SERVICES DIVISION TOTAL EXPENSES

TOTAL EXPENSES	
□ 2006	■ 2007
\$913,550	\$715,136



# NEW VIEW INDUSTRIES TRANSITIONAL PROGRAMMING CLIENT PARTICIPATION

Unduplicated Client Count	
□ 2006	■ 2007
<b>351</b>	<b>378</b>



## 2007 VOCATIONAL SERVICES DIVISION SUMMARY

### DEVELOPMENTAL ACTIVITIES PROGRAM

- \* First annual New View Talent Show
- \* Flag day celebration
- \* Instruction of paper making given at M & O day of learning
- \* Therapy dog program
- \* Speech practice program
- \* Traumatic Brain Injury cognitive stimulation program

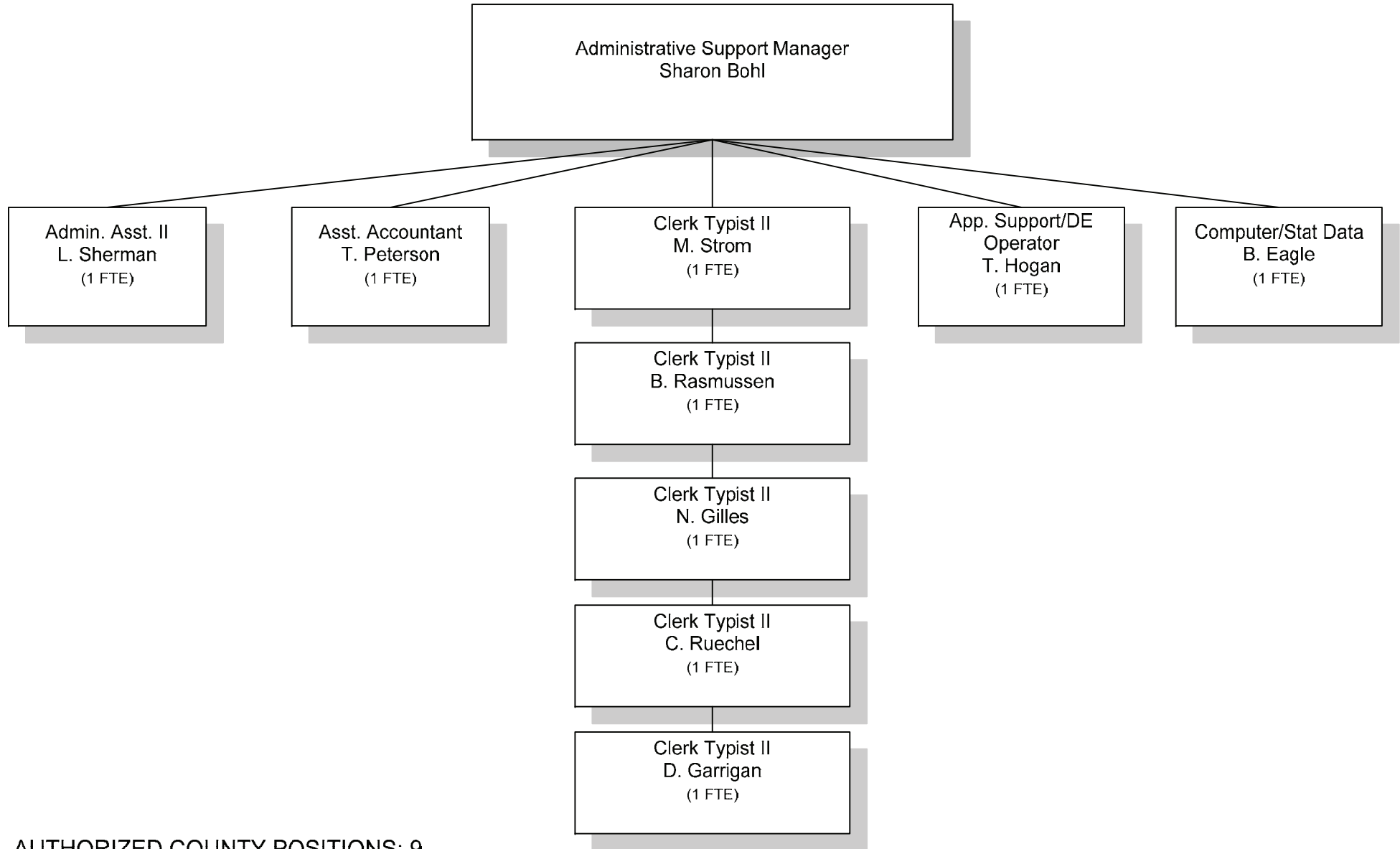
### SHELTERED EMPLOYMENT

- \* Subcontracted with 25 businesses
- \* RFW Excellence Award Presentation - Recognized Northport Industries
- \* New View Open House - Celebrating National Disability Employment Awareness Month
- \* Joined Green Bay Chamber of Commerce

### SUPPORTED EMPLOYMENT

- \* 18 Division of Vocational Rehabilitation participants placed in jobs in the community
- \* 2 WIA out of school youth participants placed in jobs in the community
- \* 114 FSET participants gained employment
- \* Successfully completed the two year grant awarded from DVR to provide Supported Employment services to the chronically mentally ill.
- \* Provided benefits analysis to 62 clients.

# HEALTH & HUMAN SERVICES ADMINISTRATIVE SUPPORT



AUTHORIZED COUNTY POSITIONS: 9  
COUNTY FTE: 9  
CONTRACTED POSITIONS: 0

As of 1/1/2008

**2007 FINANCIAL SUMMARY  
ADMINISTRATIVE SUPPORT DIVISION  
TOTAL EXPENSES**

